



Where  
*inspirational encounters*  
originate

S O F I T E L  
LONDON ST JAMES





# Sofitel London St James

## A *home* away from home

---

### About

## Sofitel London St James



*Sofitel London St James façade view*

Set in the prestigious St James's area, overlooking Pall Mall and Waterloo Place, the 6-floor Grade II listed building is home to the 5 star hotel Sofitel London St James. The royal address where British heritage meets French hedonism, comprises 183 rooms including 21 suites.

Expect the unexpected with the interior design conceived by Pierre Yves Rochon, a legendary figure in the world of luxury hospitality design, as the property fuses contemporary aesthetics with French elegance. From vibrant rooms and Michelin-starred menus to our award-winning spa, quintessential tearoom and glamorous cocktail lounge, we combine French chic and British charm to create an experience that's not just a place to stay, it's somewhere to fall in love with.

At Sofitel London St James the 'Joie de Vivre' or joy of life is embedded in our philosophy through the pursuit of ultimate pleasure.

Our hotel outlets boast a lot of variety from the Michelin-starred restaurant Wild Honey St James by acclaimed chef Antony Demetre and its more casual little sister, Bistrot at Wild Honey. Indulge in our one-of-a-kind afternoon tea at the Rose Lounge. Or opt for the intimate ambience of the St James Bar, our iconic cocktail destination. Additionally, if you're joining us in the Summer months, grab a cocktail on our Bistrot on the Terrace to enjoy the sun. All spaces are available for exclusive private dining hire.

Our guests can also take advantage of the Sofitel Spa to relax and rejuvenate with one of many sophisticated treatments that offer a transformative experience of the highest quality.

Much more than function rooms, our collection of 10 versatile spaces can be configured to suit a variety of events, making them the perfect venue for your next gathering. Whether you're planning a wedding, a lively social party, a large conference, a crowd-holding event, or an engaging roadshow, our spaces can be tailored to meet your specific needs.

For large conferences, our facilities are equipped to handle all your technical requirements, ensuring a seamless event. With ample space for attendees, breakout rooms for smaller sessions, and all the necessary audio-visual equipment, your conference will run smoothly from start to finish.

Meanwhile, Executive Chef Martin Horsley creates delicious menus that cater to a range of tastes, from business lunches to cocktail receptions, providing culinary delights that will impress your guests. With our comprehensive event solutions, you can be confident that your occasion will be a success, no matter the size or type of event.

# Facilities

## MEETINGS & EVENTS

10 MEETING SPACES

*INCLUDING*

3 BOARDROOMS

CAPACITY FOR UP TO 200 GUESTS

FLEXIBILITY TO ACCOMMODATE

LARGE SCALE EVENTS

DEDICATED EVENT SPECIALISTS

EXCLUSIVE M&E ENTRANCE

INTEGRATED A/V SOLUTIONS

## OTHER FACILITIES

SOFITEL SPA

24-HOUR SOFITEL FITNESS SUITE

24-HOUR IN-ROOM DINING

BUSINESS SUITE

CONCIERGE

VALET PARKING

LAUNDRY SERVICE

NEWSPAPER DELIVERY

COMPLIMENTARY WI-FI

## ACCOMMODATION

183 ROOMS

*INCLUDING*

8 JUNIOR SUITES

4 STUDIO SUITES

2 DELUXE SUITES

4 PRESTIGE SUITES

1 ST JAMES SUITE

1 OPERA SUITE

## RESTAURANTS & BARS

WILD HONEY ST JAMES

BISTROT AT WILD HONEY

ST JAMES BAR

THE ROSE LOUNGE

PRIVATE DINING ROOM



# Meetings & Events at *Sofitel London St James*

## Meetings

### About our meeting spaces

Sofitel Meetings offers a fully integrated, experience-focused concept that embodies the new French art de vivre, enhancing key meeting objectives through creative and inspired gastronomy, outstanding and meaningful design, and well-being offerings. This approach ensures that each meeting is unique and tailor-made to meet your specific needs and expectations.

At Sofitel London St James, we provide a memorable event experience with each meeting being an opportunity for unique encounters. Our dedicated planners work closely with you to transform your ideas into reality, offering personalised meeting spaces that blend with state-of-the-art connectivity, creative breaks, and thoughtful amenities.

Our service guarantees that every detail is attended to with the utmost care and precision, ensuring a smooth and enjoyable experience.



# Capacity Chart at *Sofitel London St James*

## *Sofitel Meetings*

### Full capacity chart

ROOM NAME	SQ. M.	SQ FT.	THEATRE	CLASSROOM	CABARET	U-SHAPE	BOARDROOM	BANQUET	STANDING RECEPTION
<u>WESTMINSTER</u>	155	1750	200	90	120	50	54	150	180
<u>WESTMINSTER_A</u>	105	1200	130	60	64	30	30	100	120
<u>WESTMINSTER_B</u>	50	540	40	20	32	20	20	40	40
<u>MAYFAIR</u>	195	2100	170	80	96	50	54	130	180
<u>MAYFAIR_A</u>	85	950	80	40	48	21	24	70	-
<u>MAYFAIR_B</u>	85	950	80	40	40	21	24	50	-
<u>PICADILLY &amp; BLOOMSBURY</u>	80	860	70	50	40	25	30	50	60
<u>PICADILLY</u>	35	380	30	24	16	18	12	20	30
<u>BLOOMSBURY</u>	40	480	35	24	16	18	18	20	30
<u>KENSINGTON</u>	44	460	30	20	-	-	15	-	20
<u>BELGRAVIA</u>	30	330	-	-	-	-	12	-	-
<u>CHELSEA</u>	25	260	-	-	-	-	8	-	-
<u>BOARDROOM</u>	45	440	-	-	-	-	12	-	-

[Click here to find more information on the venue capacity charts and the sitting plan.](#)





# The Westminster Suite at *Sofitel London St James*

*Sofitel Meetings*

## **The Westminster Suite**



*Westminster Suite in a classroom and cabaret set-up*



When you need a large venue for your business seminar or company banquet, the Westminster Suite is sure to impress. Invite up to 200 guests, and we take care of the rest.

The Westminster Suite can be divided into two distinctive suites – one for business presentations or training sessions and the other for dining and discussions. A separate anteroom can also be used as a breakout room during meetings, a VIP room for events or an interview room.

[View Capacity Chart](#)

*Whatever your agenda, the Westminster Suite at Sofitel London St James adapts to meet your requirements.*



*Westminster Suite Foyer*

# The Westminster Suite at *Sofitel London St James*

*Sofitel Meetings*

## The Westminster Suite

YOUR EVENT SET-UP	WESTMINSTER	WESTMINSTER A	WESTMINSTER B
THEATRE	200	130	40
CLASSROOM	90	60	20
CABARET	120	64	32
U-SHAPE	50	30	20
BOARDROOM	54	30	20
BANQUET	150	100	40
STANDING RECEPTION	180	120	40



### SPECIFICATIONS

Capacity: 180  
Dimensions: 195 sqm

### AUDIOVISUAL EQUIPMENT

LED Screens  
OWL camera on demand  
BARCO ClicShare  
Smart Lighting system  
Ceiling mounted speakers  
Presentation clicker  
85inc rolloaway screen on demand



# The Mayfair Suite at *Sofitel London St James*

*Sofitel Meetings*

## **The Mayfair Suite**



*Mayfair B in a boardroom set-up*

*Experience peace of mind and the French art de recevoir when you organise an event at Sofitel London St James.*

The Mayfair Suite is a great choice for conferences, breakout rooms and dinners. Host a dinner for up to 130 guests or divide the elegant space into two separate rooms. The Mayfair Suite will be the perfect pairing with The Westminster Suite.

Hold a meeting in one room and a reception in the other, or combine Mayfair A and B for 195 sqm of chic event space under crystal chandeliers. Take advantage of a large foyer to welcome your guests in style. The ideal location for registration desks and refreshment breaks. It is also a charming venue for buffet lunches and dinners.

[View Capacity Chart](#)



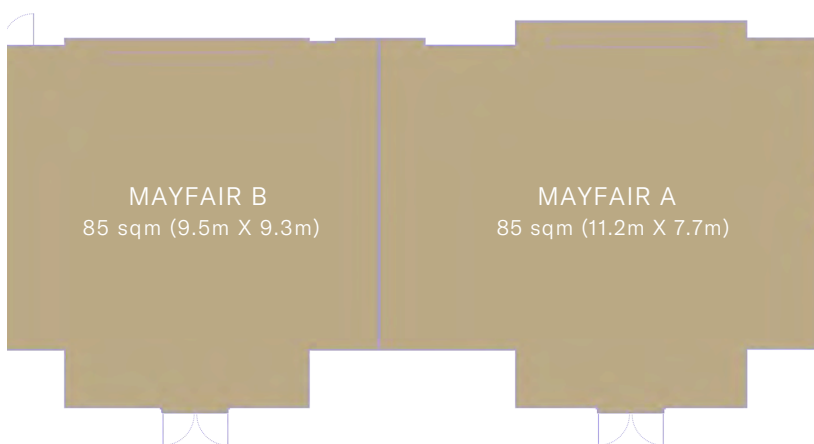
*Bar in the foyer*

# The Mayfair Suite at *Sofitel London St James*

*Sofitel Meetings*

## The Mayfair Suite

YOUR EVENT SET-UP	WESTMINSTER	MAYFAIR A	MAYFAIR B
THEATRE	170	80	80
CLASSROOM	80	40	40
CABARET	96	48	40
U-SHAPE	50	21	21
BOARDROOM	54	24	24
BANQUET	130	70	50
STANDING RECEPTION	180	-	-



### SPECIFICATIONS

Capacity: 180

Dimensions: 155 sqm

### AUDIOVISUAL EQUIPMENT

Built-in screens and projectors

OWL camera on demand

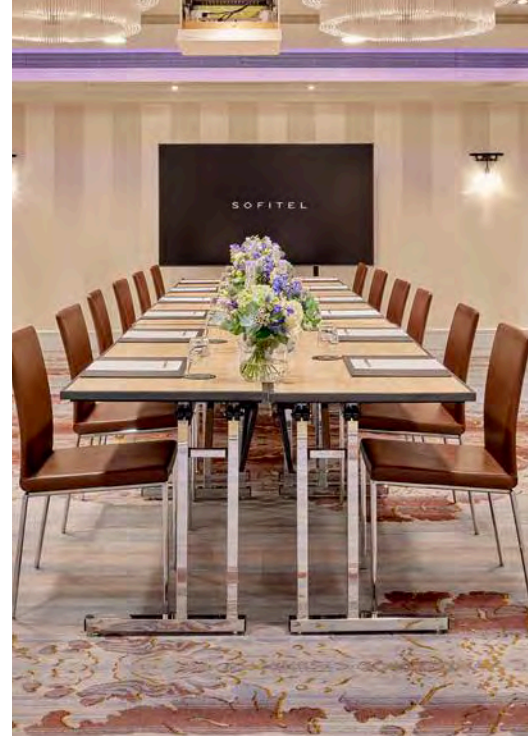
BARCO ClicShare

Smart Lighting system

Ceiling mounted speakers

Presentation clicker

85inc rollaway screen on demand



# The Piccadilly and Bloomsbury Suites at *Sofitel London St James*

*Sofitel Meetings*

## **The Piccadilly and Bloomsbury Suite**



*Piccadilly and Bloomsbury suite in a boardroom set-up*

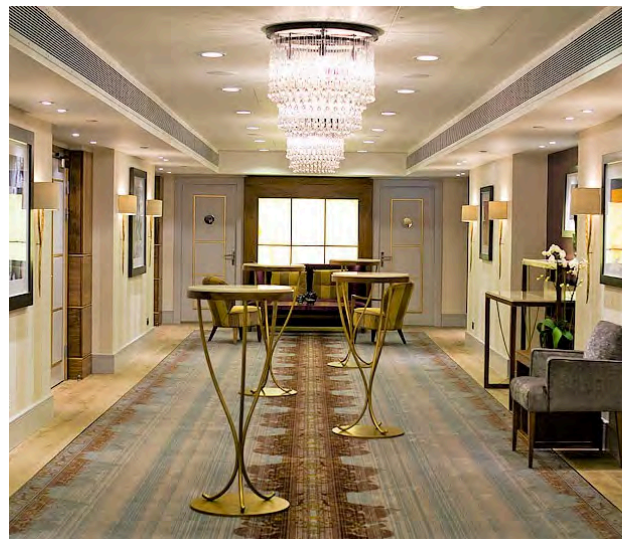
Host your conference or event for up to 70 guests in the Piccadilly–Bloomsbury Suite. This cheerful space enjoys natural daylight and can be divided into two separate rooms.

Welcome your guests in true Sofitel style: our team is well-versed in the French art de recevoir which makes our meeting and event universe very unique. We go beyond cutting-edge conferencing equipment and flexible venues to provide you with all-inclusive event solutions that make lasting impressions.

The Piccadilly–Bloomsbury Suite has an adjacent foyer that can be used for guest registration, pre-dinner drinks or refreshment breaks between meetings. Just tell us what you need, and we will make sure your event is a total success.

[View Capacity Chart](#)

*Our team is well-versed in the French art de recevoir making our meeting and event universe incredibly unique.*



*Piccadilly and Bloomsbury suite foyer*

# The Piccadilly and Bloomsbury Suites at *Sofitel London St James*

## *Sofitel Meetings*

### **The Piccadilly and Bloomsbury Suites**

YOUR EVENT SET-UP	PICCADILLY AND BLOOMSBURY	PICCADILLY	BLOOMSBURY
THEATRE	70	30	35
CLASSROOM	50	24	24
CABARET	40	16	16
U-SHAPE	25	18	18
BOARDROOM	30	12	18
BANQUET	50	20	20
STANDING RECEPTION	60	30	30



#### **SPECIFICATIONS**

Capacity: 60  
Dimensions: 80 sqm

#### **AUDIOVISUAL EQUIPMENT**

Built-in screens and projectors  
OWL camera on demand  
BARCO ClicShare  
Ceiling mounted speakers  
Presentation clicker  
85inc rolloaway screen on demand





# The Kensington Suite at *Sofitel London St James*

*Sofitel Meetings*

## **The Kensington Suite**



*Kensington in a boardroom set-up*

*We work discreetly behind the scenes to ensure that everything runs smoothly.*

Enjoy the natural daylight when you organise business meetings, a banquet or a corporate event in our Kensington Suite.

This suite provides everything you need for a meeting or event. State-of-the-art audiovisual equipment is concealed until needed, soundproof windows let the daylight in while keeping the city noise out and multiple layouts offer numerous possibilities in this 44 sqm space.

Should you require extra space for refreshment breaks or guest registration, The Kensington Suite will work perfectly with The Piccadilly and Bloomsbury Suite.

[View Capacity Chart](#)



*Kensington in a classroom set-up*

# The Kensington Suite at *Sofitel London St James*

*Sofitel Meetings*

## The Kensington Suite

YOUR EVENT SET-UP	KENSINGTON
THEATRE	30
CLASSROOM	20
CABARET	-
U-SHAPE	-
BOARDROOM	15
BANQUET	-
STANDING RECEPTION	-



### SPECIFICATIONS

Capacity: 18

Dimensions: 44 sqm

### AUDIOVISUAL EQUIPMENT

Built-in screens and projectors

OWL camera on demand

BARCO ClicShare

Ceiling mounted speakers

Presentation clicker

85inc rollaway screen on demand



# Belgravia and Chelsea at *Sofitel London St James*

*Sofitel Meetings*

## **Belgravia and Chelsea**



*Belgravia meeting space in a boardroom set-up*

*You focus on the business at hand; our expert team of event planners will take care of everything else.*

Beautiful boardroom tables for up to 8 or 12 people form the centrepiece of these highly exclusive suites. The Belgravia & Chelsea are ideal for executive sessions and closed meetings.

When privacy is crucial, our Belgravia & Chelsea Suites are sophisticated venues for exclusive meetings. Settle into ergonomic chairs and take advantage of the latest generation audio-visual and conferencing equipment

[View Capacity Chart](#)



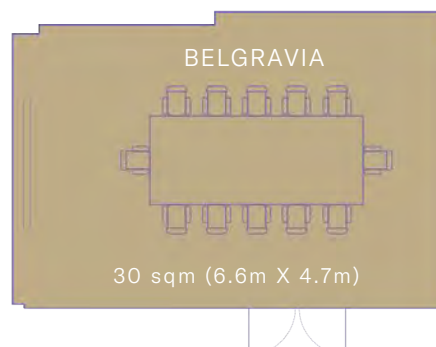
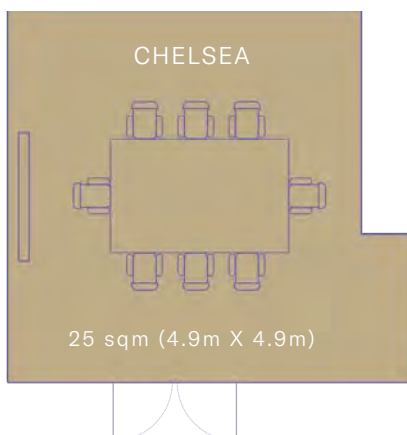
*Chelsea meeting space in a boardroom set-up*

# Belgravia and Chelsea at *Sofitel London St James*

## *Sofitel Meetings*

### **Belgravia and Chelsea**

YOUR EVENT SET-UP	BELGRAVIA	CHELSEA
THEATRE	-	-
CLASSROOM	-	-
CABARET	-	-
U-SHAPE	-	-
BOARDROOM	12	8
BANQUET	-	-
STANDING RECEPTION	-	-



#### **SPECIFICATIONS**

Capacity: 12 & 8

Dimensions: 30 & 25 sqm

#### **AUDIOVISUAL EQUIPMENT**

LED Screen

Smart camera

OWL camera on demand

BARCO ClicShare

Ceiling mounted speakers

Presentation clicker

85inc rolloaway screen on demand



# The Boardroom at *Sofitel London St James*

*Sofitel Meetings*

## **The Boardroom**



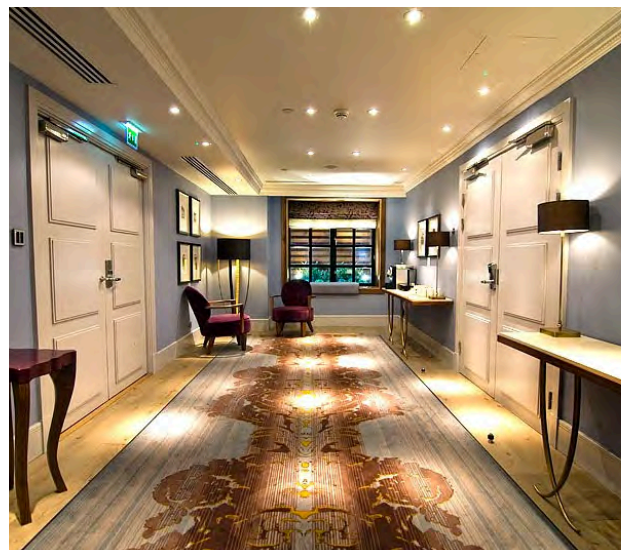
*Boardroom suite in a boardroom set-up*

*A handsome Boardroom Suite, comprising a naturally lit boardroom and stylish anteroom.*

Beautiful mahogany furniture and paintings on the walls create a serene atmosphere for business discussions. Ergonomic armchairs provide adjustable comfort. With cutting-edge equipment and mood lighting, our team of meeting planners sets the scene for your event, be it an important board meeting or champagne celebration.

The anteroom is ideal for a tête-à-tête or a refreshing break.

[View Capacity Chart](#)



*Boardroom foyer*

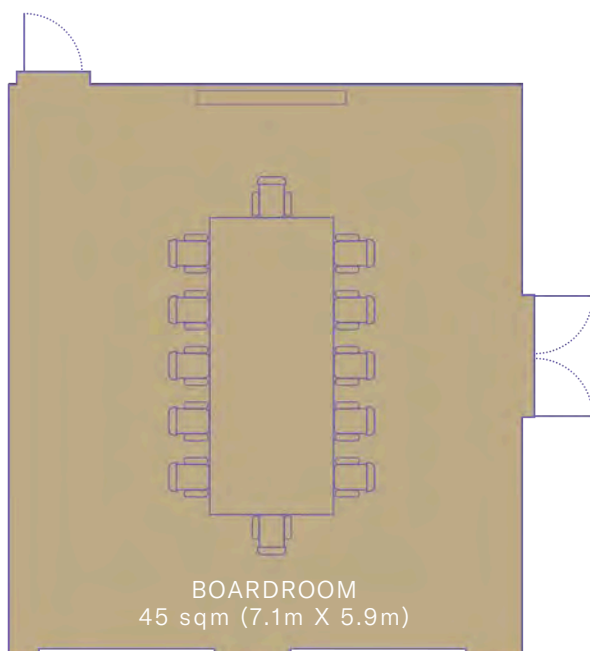


# The Boardroom at *Sofitel London St James*

*Sofitel Meetings*

## The Boardroom

YOUR EVENT SET-UP	BOARDROOM
THEATRE	-
CLASSROOM	-
CABARET	-
U-SHAPE	-
BOARDROOM	12
BANQUET	-
STANDING RECEPTION	-



### SPECIFICATIONS

Capacity: 12

Dimensions: 45 sqm

### AUDIOVISUAL EQUIPMENT

LED Screen

Smart camera

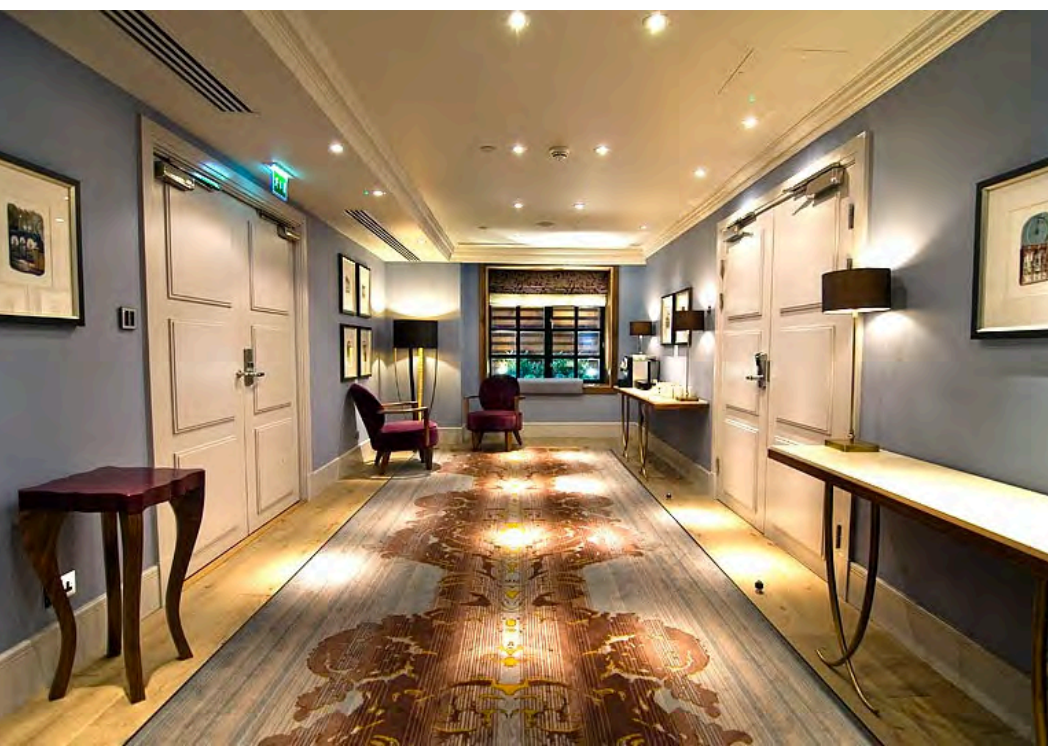
OWL camera on demand (extra fee)

BARCO ClicShare

Ceiling mounted speakers

Presentation clicker

85inc rolloaway screen on demand



# Reward Scheme

## *Sofitel London St James*

*Sofitel Meetings*

### Reward Scheme

#### DISCOVER ALL ACCOR LIVE LIMITLESS

##### **Excellence**

Your perfect stay – anytime, anywhere, always at the best price

##### **Recognition**

Rewards from Day One, with higher status the more often you stay

##### **Attention**

Tailor-made service and special touches beyond your expectations

##### **Passion**

VIP access to exciting gastronomy, music and sporting events all over the world

#### ALL MEETING PLANNER

##### **2 euros spent = 1 Rewards point**

Earn 1 Rewards point for every 2 Euros spent whenever you plan an event in one of our hotels.

##### **Flex to fit**

Finance future events using your points. Or use them for your next trip, for concert tickets, or a match. Your points, your choice

##### **Sharing points**

You can also share your points with other members of ALL.

##### **Points, whenever**

There are no blackout dates on Rewards points. Use them whenever you choose.

##### **Points and peace of mind**

There are no expiry dates on your points. No rush, no fuss.

##### **Plan more, earn more**

Earn even more Rewards points whenever you plan an event.

##### **Free membership**

It's quick and easy to join the ALL Meeting Planner.

*Group rates are available for 8 rooms or more per night. Enquire with your meeting planner.*

**SOFITEL LONDON ST JAMES**  
6 WATERLOO PLACE - LONDON - SW1Y 4AN  
UNITED KINGDOM TEL. +44 (0) 20 7747 2253  
EVENTS.STJAMES@SOFITEL.COM  
SOFITELSTJAMES.COM

**S O F I T E L**  
LONDON ST JAMES

