

CONCIERGE

MONTHLY NEWSLETTER NOVEMBER 2019



SOFITEL
HOTELS & RESORTS

LONDON ST JAMES

DEAR GUESTS

We wish you an enjoyable stay at one of Sofitel's luxury addresses, a symbol of French elegance around the world. This letter presents the Sofitel programme for the month of November. We are delighted to recommend some Magnifique local events related to Sofitel Art de vivre: culture, design and gastronomy. Please feel free to contact our dedicated Concierge team.

Joe Rodrigues,
Les Clefs d'Or Head Concierge



HOTEL EVENTS NEWS

[FESTIVE SEASON AT SOFITEL LONDON ST JAMES](#)

From 18th November, enjoy the festive season at Sofitel London St James with special menus created by acclaimed Chef Anthony Demetre at Wild Honey St James, whether in the restaurant or its 16-seat private dining room.

Treat yourself to a delightful Festive Afternoon Tea at The Rose Lounge with "Scottish Prawn Cocktail" sandwich and a "Gingerbread Cookie" for dessert. Sample "Milky Cat" our Festive cocktail at St James Bar and our seasonal package "Razzle Dazzle Experience" at the award-winning spa, Sofitel SPA.

CITY EVENT

[GEORGE IV: ART & SPECTACLE](#)
15/11/2019 – 03/05/2020
THE QUEEN'S GALLERY

The Queen's Gallery showcases the outstanding and unrivalled art collection of George IV, one of the most magnificent of British monarchs.

The collection brings together Dutch and Flemish masterpieces, portraits by Sir Thomas Lawrence and Sir Joshua Reynolds, delicate French porcelain, goldsmiths' work and elegant books and drawings.

Since 1820, the King purchased many paintings, textiles, furniture, books and ceramics from finest artists, representing his passion for art.



CITY EVENT

[DORA MAAR](#)
20/11/2019 – 15/03/2020
TATE MODERN

Tate Modern continues to celebrate the work of female artists with the biggest retrospective of Dora Maar ever held in the UK.

Dora became a celebrated icon of surrealism during the 1930s and with her vision of the unusual that she used for her photography as well as social documentary projects.

The exhibition showcases her work alongside her contemporaries. You will discover her relationship with Pablo Picasso that impacted both their careers. Together they created a series of portraits with experimental photographic and printmaking techniques.



CITY EVENT

[CARS: ACCELERATING THE MODERN WORLD](#)
23/11/2019 – 19/04/2020
VICTORIA & ALBERT MUSEUM

"Cars: Accelerating the Modern World" reveals the most loved and contested innovations in the world, and explains how they revolutionised the manufacturing industry, while changing our cities, environment and economies.

The exhibition brings together 15 cars that tell stories about design and their impact on the world. You will see the first production car created; an autonomous flying car; a converted low-rider and a 1950s concept car, as well as diverse products, photography and films.

Divided in three sections; "Going East"; "Making More" and "Shaping Space" you will understand the story behind the creation of cars and their impacts on the world.



TOURISM INTEREST

CHRISTMAS LIGHTS

FROM 14/11/2019

Inspired by the world of "Haute Couture", Sofitel London St James will be transformed on Thursday 14th November into a fashion house, bringing to life the chicness of French designers, recreating timeless French elegance and glitzy joie de vivre.

After discovering our beautiful Christmas décor, head off to a festive evening in the St James area with street entertainments, hot chocolate and churros stations and festive performers. With Jermyn Street and Regent Street being closed to traffic, you will be able to wander around and discover the dazzling Christmas display.

Don't miss the official illuminating show of the iconic "Spirit of Christmas" angels on Regent Street!



SKATE AT SOMERSET HOUSE

13/11/2019 – 12/01/2020



Kick off the Festive season with London's most beautiful ice rink at Somerset House!

The ice rink is celebrating its 20th years, transforming the Edmond J. Safra Fountain Court into a beautiful winter destination with a signature 40ft Christmas tree.

In partnership with Fortnum and Mason, you will enjoy the Christmas Arcade for seasonal shopping, gourmet dining in Fortnum's Lodge and a treat of a delightful Baileys Hot Chocolate at the Baileys Treat Bar.

CHRISTMAS AT KEW

20/11/2019 – 05/01/2020

Christmas at Kew is back, transforming the Royal Botanic Garden into a magical experience of festive lights and sounds.

Discover a magical new route that includes a host of all-new installations. An enchanted dazzling arch will lead you to a cascade of glowing silvery shards at the Treetop Walkway. Glittering spiral trees and dynamic laser projections will illuminate the iconic Temperate House, while the Holly Bushes will sing and the Tunnel of Light will twinkle, creating the most enchanting atmosphere.



EFG LONDON JAZZ FESTIVAL

15/11/2019 – 24/11/2019



If you are a Jazz lover, do not miss The EFG London Jazz Festival, one of the UK's landmark musical celebrations!

Renowned for its eclectic mix of talented musicians from around the world, discover a range of amazing talents, bringing together jazz masters, with cutting-edge young bands, international legends as well as emerging British stars.

SHOPPING ADDRESSES

LARSSON & JENNINGS

53 MONMOUTH STREET
TUBE: COVENT GARDEN

Located in Seven Dials, the Larsson & Jennings shop offers Swiss made contemporary watches. The identity of the brand is to reimagine classic design through contemporary craftsmanship and style, creating harmony between art and precision.

More than just a shop, Larsson & Jennings offers a real experience with an in-house Fika bar, where customers can take time to shop the collection.



HALCYON GALLERY

144-146 NEW BOND ST, MAYFAIR
TUBE: OXFORD CIRCUS

Halcyon Gallery is specialised in modern and contemporary art, with works from emerging and established international artists.

In their three art galleries in London, they provide the invaluable opportunity for artistic innovation, with the aim to be the centre of the fine art world, playing a key role in London's creative and cultural landscape.



LIFE IS MAGNIFIQUE...

IN WASHINGTON

FOCUS ON SOFTEL WASHINGTON DC LAFAYETTE SQUARE

Sofitel Washington DC Lafayette Square is ideally located close to the White House and within walking distance to local monuments and museums.

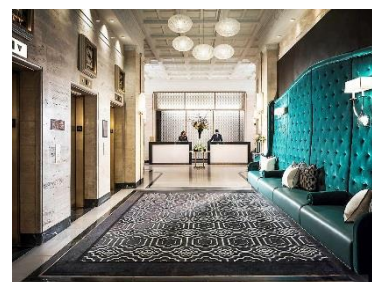
In an historic building, the elegant 5-star hotel showcases the Sofitel's art de vivre with a distinctive style, delightful cuisine and incomparable service.

Offering 237 rooms over 12 floors including 17 suites, the exclusive rooms have elegant art-deco accents and a timeless décor.

Treat-yourself to some classic French dishes with a Washington DC twist at the Opaline Brasserie!

806 15th Street NW 20005 Washington, D.C. United States

Tel.: (+1)2027308800 - Email: h3293@sofitel.com



SOFITEL LONDON ST JAMES

6 WATERLOO PLACE SW1Y 4AN LONDON.

TEL.: +44 (0) 20 7747 2200

www.sofitelstjames.com

